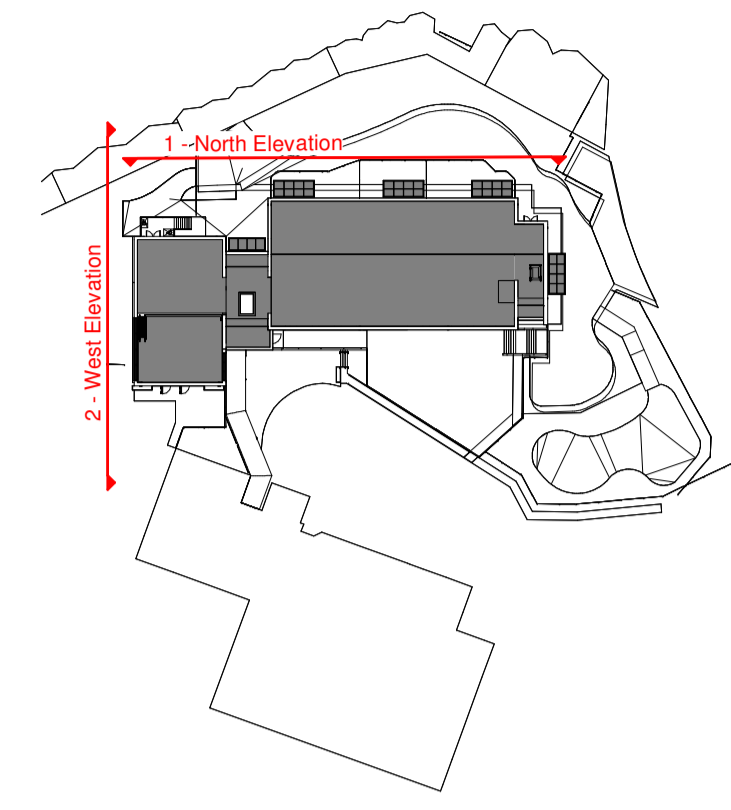
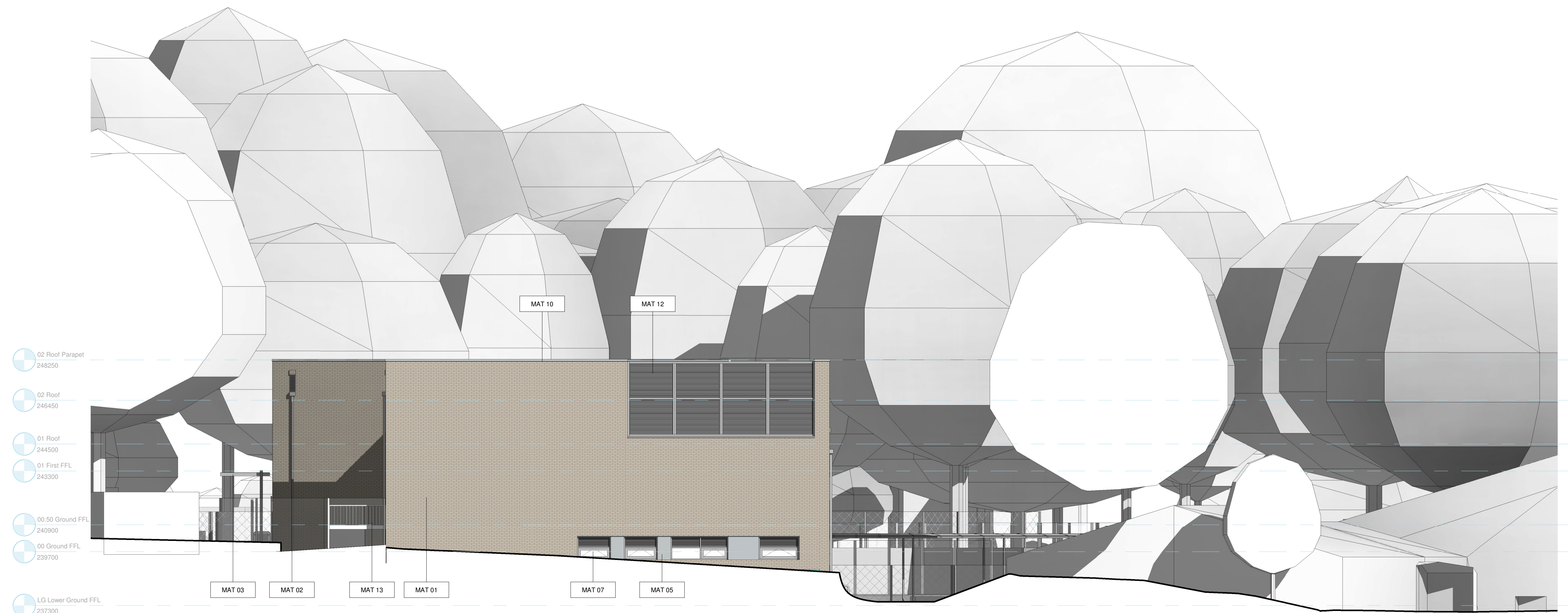


4 North Elevation
 1 : 100



Elevation Materials Key

- MAT 01 Facing brick (colour TBC)
- MAT 02 PPC Aluminium Rainwater Pipe (colour TBC)
- MAT 03 Painted Steel + Polycarbonate canopy (colour TBC)
- MAT 04 Aluminium PPC Cladding Panel
- MAT 05 Aluminium PPC Spandrel Panel (colour TBC)
- MAT 06 Weldmesh Anticlimb Fence Panel
- MAT 07 Thermally Broken PPC Aluminium Window System (colour TBC)
- MAT 08 Aluminium Curtain Walling System (colour to match windows)
- MAT 09 Fixed Roof Guarding System (Galvanised Steel)
- MAT 10 Aluminium Roof Coping (colour to match windows)
- MAT 11 PPC Aluminium Louvres as part of Window System (colour to match windows)
- MAT 12 PPC Acoustic Plant screen louvres. (colour TBC)
- MAT 13 Galvanised Steel Handrails



1 West Elevation
 1 : 100

P06	04.03.2025	Revised planning elevations	NY	DM
P05	20.02.2025	Revised planning draft	NY	DM
P04	10.12.2024	Stage 3 WDC Issue	NW	DM
P03	27.11.2024	Planning Issue	NY	DM

Rev	Date	Revision Details	Dr	Ch
-----	------	------------------	----	----

London: 76 Great Suffolk Street, London, SE1 0BL
 T 020 7928 2773 E london@ecearchitecture.com
 Sussex: 64-68 Brighton Road, Worthing, West Sussex, BN11 2EN
 T 01903 248777 E sussex@ecearchitecture.com
 Bristol: Westworks, Beacon Tower, Colston Street, Bristol, BS1 4XE
 T 0117 214 1101 E bristol@ecowestworks.com
ECE Architecture
 www.ecearchitecture.com

WILLMOTT DIXON
 SINCE 1852
East Sussex County Council

Job Title
Grove Park Secondary School

Drawing Title
Colour Elevations - North and West

Scale
1:100 @ A1 / 1:200 @ A3

metres	2	4	6	8	10
--------	---	---	---	---	----

Project	Originator	Zone	Level	Type	Displ.	Dr. No.	Rev
GROV-ECE-XX-ZZ-D-A						0411	P06

Drawn	Checked	Date
NY	DM	26/02/2024

Status
S8 - Planning Information